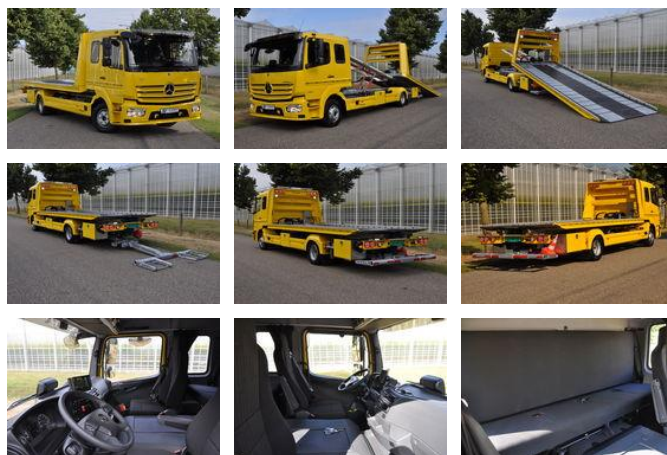


Mercedes-Benz Atego 1224 EURO: 6E * NEW * 9263

General features

Brand	Mercedes-Benz
Model	Atego 1224
Subcategory	Tow-recovery
Odometer reading	20km
Construction year	2025
Color	Yellow
General condition	Very good
Fuel	Diesel
Emission class	Euro 6
Reference	9263



Characteristics

Empty weight	8.465kg
Load capacity	3.525kg
GVW	11.990kg
Length	904cm
Width	246cm
Cabin	Crewcab
Serial number	W1T96702710829263
Cylinder contents	7.698cc

Mercedes-Benz Atego 1224 EURO: 6E * NEW * 9263

Technical specifications

Number of axes	2
Axis configuration	4x2
Transmission	Automatic
Engine output	238hp

Description

Detailed information about the Mercedes Benz Atego 1224 L / NR 4x2 BL EURO: 6E - 2 charger TEVOR NEW !!!! 238 HP - 1000 Nm (OM936) Emission class: 6 (E) Automatic gearbox / PowerShift 3 Seating / sleeping Cab - L Cab - Classicspace 6 seats Mileage: 20 km Wheelbase: 4820 mm GVW: 11990 kg Weight: 8405 kg Load capacity: 3585 kg Front axle: leaf suspension (4400 kg) Rear axle: air suspension (8100 kg) Color: Yellow - MB1212 3 year warranty / 250000 km Axle 1: 245/70 R17.5 Michelin - steering axle Axle 2: 245/70 R17.5 M + S Michelin - dual air drive axle Length: 916 cm Width: 246 cm Height: 286 cm Options: Air conditioning (automatically adjustable) Parking heater (2000 Watt) Tempomat (Cruise control) Lane Keeping Assist Active brake assist Fleetboard / Eco support Diff. lock Extra stabilization for high loads (C6S) Sunvisor Electrically operated windows Electrically operated and heated exterior mirrors Pollen filter PSM Module PowerTakeOff (MB 60-1C) Board computer Speed limiter (90 km / h) ABS ASR Stability Control Assist (ESP) Fog lamps Digital tachograph VDO 4.0 version Disc brakes front & rear Radio CD player / Bluetooth Fleetboard Eco Support Driver's seat air suspended Driver seat armrests Velvet upholstery seats 180 ltr. fuel tank - 25 ltr. AdBlue tank - lockable AdBlue tank 25 liters Lockable tanks Ringfeder Air connections for trailer Electricity connections for trailer 12/24 volt Disc brakes front and rear Central door lock including remote control LED daylight Spare wheel / holder Body colored bumper Side protection in body color Grill in body color Structure: Brand: Tevor Year of construction: NEW EU Homologation Loading platform (ZP50 - C1) - 5,000 kg 6.4 m (galvanized) Hydraulic lift: 2500 kg (WY-2501) Winch Come Up HV-12 / 5100 kg, hydraulic sliding, pneumatic freewheel Wheel trestles 2x Remote control 8 channel with emergency stop Ball coupling Tool cabinet 800x 500 x 500 stainless steel stainless steel Control box, stainless steel High flyer with LED lighting LED / Strobos light bar, 1600 mm LED flashes mounted on the front and back 2 x LED work lamp 12V - 15 pin plug Waste bin 12/24 Volts starting aid Starting cable 6 meters Boom / Shovel Traffic cones with holder Hose retractor

Accessories

- Trailer coupling
- Automatic
- Bluetooth
- Central doorlocking
- Differential Lock
- Heated Mirrors
- Towbar
- Rotating beacon
-
-
-
-
-
-

- [illegible]

-
-
-
-