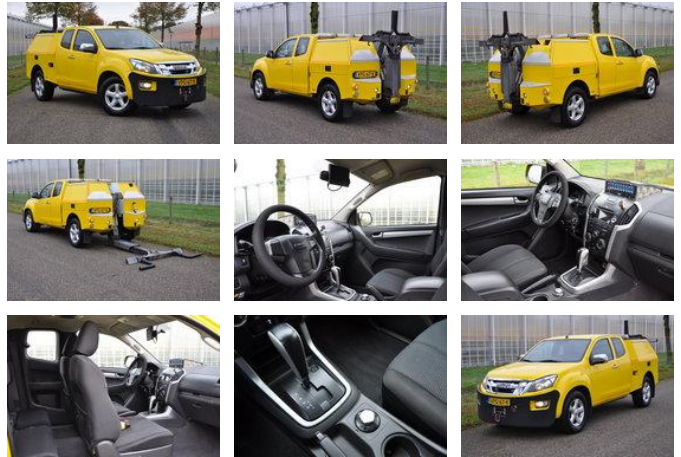


Isuzu D-Max 2.5TD Intercooler 4WD - AWU - Lepelwagen

General features

Brand	Isuzu
Subcategory	Tow-recovery
Licence plate	VPG-67-K
Odometer reading	282.007km
Construction year	2014
Date of first registration	08-10-2014
Color	Yellow
Condition	Used
General condition	Good
Fuel	Diesel
Emission class	Euro 5
Reference	Isuzu DMax



Characteristics

Empty weight	2.687kg
Load capacity	313kg
GVW	3.000kg
Length	495cm
Width	187cm
Cabin	Crewcab
Serial number	MPATFS86JDT009344
Cylinder contents	2.499cc

Isuzu D-Max 2.5TD Intercooler 4WD - AWU - Lepelwagen

Technical specifications

Number of axes	2
Axis configuration	4x4
Transmission	Automatic
Engine output	120kw

Description

Detailed information about the Isuzu D-Max light duty wheel lift vehicle GVW: 3000 kg Mileage: 282007 km 1e registration: 08-10-2014 4 seats Wheelbase: 310 cm Emission class: 5 163 hp - 4 cylinder Tires axle 1: 255/65R17 - 75% Tires axle 2: 255/65R17 - 70% Options: 4 wheel drive Automatic Gearbox Air conditioning Electrically operated windows Electrically operated and heated door mirrors Multi-functional steering wheel Alloy wheels Beacon beam Various work lights fog lights Radio / CD / USB / BLUETOOTH On-board computer ABS SRS Disc brakes front & rear Driver's airbag Passenger airbag Total 4 seats Structure: Brand: Isoli Type: LDR10 Year of construction: 2014 Hydraulic wheel Lift Air suspension on the rear axle Winch, mechanical freewheel Front winch Air suspension on the rear axle ball coupling tool cabinets Counter weight front bumper Starting aid 12V Directly available !

Accessories

-
-
- Anti-lock braking system
- Reversing camera
- Air conditioning
- Cruise control
- Electrically operated windows
- Toolbox
- Alloy wheels
- Air suspension
- Radio/CD player
- Spotlights
- Air suspension system
- Disc brakes
- Power steering
- Airbags
- Heater
- All wheel drive
-
-
-
-
-
-

-
-
-
-
-